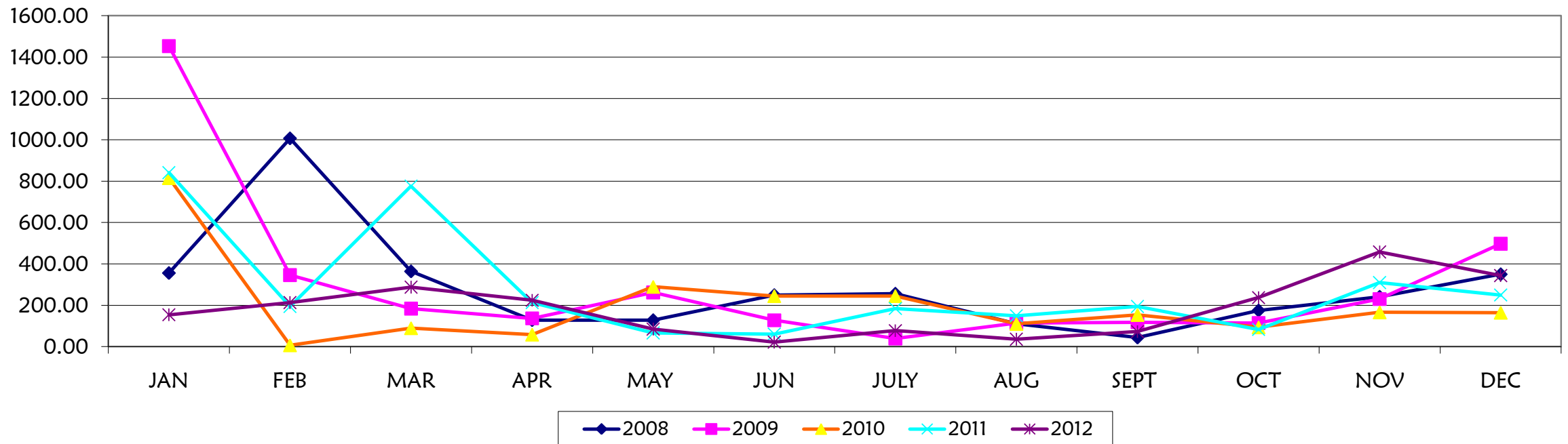


DAERAH : KOTA MARUDU

STESEN : AGRICULTURE STATION DAMAI

YEAR	MONTH													TOTAL	AVERAGE
	JAN	FEB	MAR	APR	MAY	JUN	JULY	AUG	SEPT	OCT	NOV	DEC			
2008	356.00	1007.00	364.00	128.00	128.00	249.00	256.00	110.00	44.00	175.00	241.00	350.00	3408.00	284.00	
2009	1453.00	345.60	183.85	136.40	261.94	127.30	39.30	113.80	117.8	114.05	229.86	497.13	3620.03	301.67	
2010	815.10	6.70	89.50	58.35	289.40	244.60	244.70	109.90	153.25	93.57	165.96	164.16	2435.19	202.93	
2011	841.3	194.4	776.4	212.9	65.8	60.80	184.34	149.15	194.20	82.70	309.90	249.50	3321.38	276.78	
2012	153.9	213.0	287.7	224.2	84.69	22.02	77.17	35.60	72.70	236.92	457.8	343.5	2209.24	184.10	

Stesyen Pertanian Damai, Kota Marudu



DAERAH : KOTA MARUDU

STESEN : RANCANGAN LANGKON

YEAR	MONTH													TOTAL	AVERAGE
	JAN	FEB	MAR	APR	MAY	JUN	JULY	AUG	SEPT	OCT	NOV	DEC			
2008	601.20	948.40	232.60	81.50	197.70	163.50	198.30	133.50	58.50	268.70	450.70	227.00	3561.60	296.80	
2009	940.00	348.70	224.10	44.40	132.10	54.00	68.60	60.50	162.3	201.8	148.2	272.9	2657.60	221.47	
2010	645.70	2.50	86.50	66.50	162.50	194.80	191.00	280.80	128.50	71.10	205.70	138.30	2173.90	181.16	
2011	1,073.8	198.2	1,023.9	289.7	63.0	56.30	86.50	101.00	113.10	132.10	221.40	430.50	3789.50	315.79	
2012	292.6	153.9	302.5	171.9	54.90	101.40	159.30	24.70	174.00	293.70	322.7	514.2	2565.80	213.82	

DAERAH : KOTA MARUDU

STESEN : TERITIPAN ESTATE

YEAR	MONTH													TOTAL	AVERAGE
	JAN	FEB	MAR	APR	MAY	JUN	JULY	AUG	SEPT	OCT	NOV	DEC			
2008	356.00	1007.00	364.00	128.00	128.00	249.00	256.00	110.00	44.00	175.00	241.00	350.00	3408.00	284.00	
2009	892.40	308.60	83.10	22.90	43.50	15.20	43.40	56.70	100.2	50.9	247.7	524.6	2389.20	199.10	
2010	854.90	N.A	221.40	43.00	147.90	341.40	433.60	427.10	262.00	145.06	366.40	200.90	3443.66	313.06	
2011	1,252.0	165.1	1,005.5	517.6	57.3	46.10	85.10	53.10	49.40	41.75	396.35	150.95	3820.18	318.35	
2012	126.8	121.9	131.9	111.1	34.10	30.60	94.40	35.60	42.90	319.50	442.7	333.3	1824.78	152.07	

DAERAH : KOTA MARUDU

STESEN : ONGKILAN ESTATE

YEAR	MONTH													
	JAN	FEB	MAR	APR	MAY	JUN	JULY	AUG	SEPT	OCT	NOV	DEC	TOTAL	AVERAGE
2008	673.20	1170.50	527.10	111.50	70.60	136.40	160.80	66.10	96.30	72.80	113.40	146.70	3345.40	278.78
2009	887.80	31.90	95.80	33.10	47.50	17.90	44.00	62.50	99.3	39.8	226.7	524	2110.30	175.86
2010	889.50	N.A	200.70	56.80	168.50	345.10	428.90	437.90	248.70	129.70	362.40	209.60	3477.80	316.16
2011	1,238.5	173.2	1,050.7	503.5	46.9	27.50	86.70	76.50	64.20	29.90	201.20	305.50	3804.25	317.02
2012	109.0	127.5	156.1	114.7	39.50	21.60	78.70	22.00	41.70	322.90	398.3	460.2	1892.15	157.68

]

