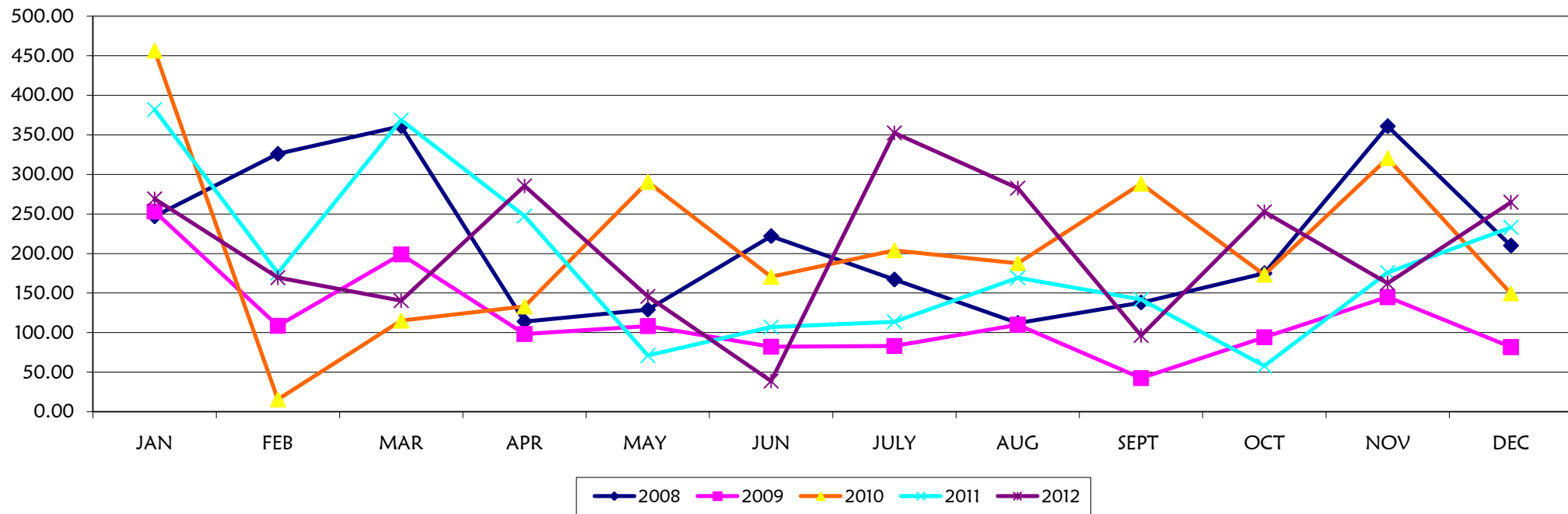


DAERAH : RANAU

STESEN : AGRICULTURE OFFICE / TOWN

YEAR	MONTH													
	JAN	FEB	MAR	APR	MAY	JUN	JULY	AUG	SEPT	OCT	NOV	DEC	TOTAL	AVERAGE
2008	247.00	326.00	361.00	114.00	129.00	222.00	167.00	112.00	138.00	175.00	361.00	210.00	2,562.00	213.50
2009	253.00	108.60	199.00	98.21	108.31	82.20	83.10	110.00	42.60	94.2	144.95	81.75	1,405.92	117.16
2010	456.40	15.50	115.20	133.09	290.55	170.50	204.00	187.70	288.15	173.20	320.50	149.60	2,504.39	208.70
2011	382.0	175.3	368.7	247.4	71.1	107.10	113.55	169.28	142.05	58.00	176.00	233.00	2,243.38	186.95
2012	269.1	169.5	140.4	285.5	145.7	38.7	352.4	282.6	96.4	252.8	162.4	264.80	2,460.27	205.02

Pejabat Pertanian Ranau



DAERAH : RANAU

STESEN : AGRICULTURE REST STATIONS KUNDASANG (MESILOU)

YEAR	MONTH													
	JAN	FEB	MAR	APR	MAY	JUN	JULY	AUG	SEPT	OCT	NOV	DEC	TOTAL	AVERAGE
2008	272.70	464.60	257.90	188.60	215.40	298.10	303.40	159.10	149.70	154.5	327.4	220.30	3,011.70	250.98
2009	298.90	143.00	146.10	97.40	124.90	62.10	151.20	102.70	341.20	191.90	395.00	120.30	2,174.70	181.23
2010	332.70	4.20	111.90	69.70	271.70	172.50	311.50	336.20	325.70	253.90	341.60	187.00	2,718.60	226.55
2011	302.5	267.4	455.4	331.8	210.1	157.40	121.30	182.60	181.60	149.90	189.50	259.60	2,809.10	234.09
2012	301.1	114.1	163.2	262.3	184.8	48.8	241.7	156.5	141.8	188.8	175.9	228.60	2,207.60	183.97

Stesyen Pertanian Mesilou Kudasang, Ranau

