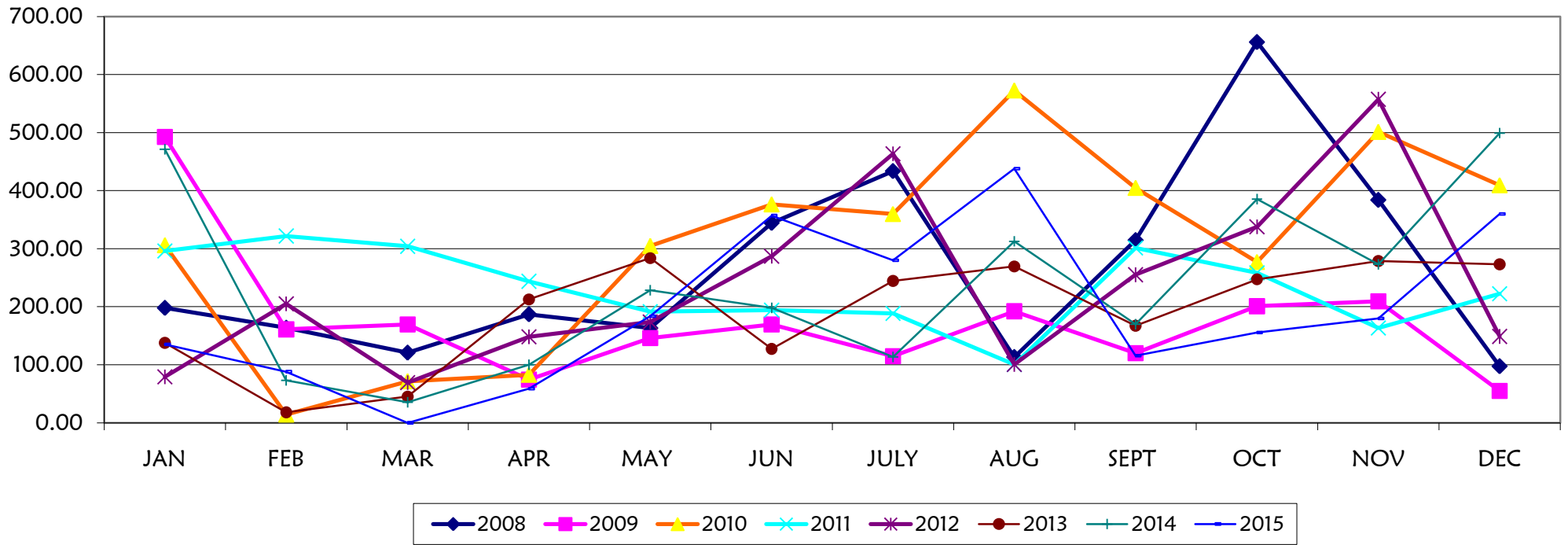


DAERAH : KUALA PENYU

STESEN : AGRICULTURE STATION TINAMBAK

YEAR	MONTH													
	JAN	FEB	MAR	APR	MAY	JUN	JULY	AUG	SEPT	OCT	NOV	DEC	TOTAL	AVERAGE
2008	197.90	163.60	120.80	186.90	163.10	344.30	433.60	113.20	314.60	655.90	383.90	97.40	3,077.80	264.60
2009	492.40	161.00	169.50	74.50	146.10	169.30	114.70	192.10	120.00	200.90	209.20	55.00	2,049.70	175.39
2010	305.90	14.00	71.50	82.60	304.60	376.20	359.60	572.50	404.60	277.00	501.10	409.20	3,269.60	306.57
2011	295.90	321.80	304.10	243.70	191.40	194.20	188.60	100.30	301.30	258.40	163.30	222.30	2,785.30	232.11
2012	79.20	205.00	69.10	148.20	173.80	286.80	463.50	100.60	255.10	337.70	557.30	148.80	2,825.10	235.43
2013	137.80	18.00	45.20	212.60	283.70	127.40	244.40	269.40	167.30	247.20	278.80	273.00	2,304.80	192.07
2014	471.30	73.00	35.50	100.00	228.30	197.90	113.30	312.70	169.70	385.30	273.10	499.20	2,859.30	238.3
2015	135.20	88.00	N.A	58.80	183.80	356.90	280.10	437.90	115.70	155.50	179.80	359.90	2,351.60	213.8

Stesyen Pertanian Tinambak, Kuala Penyu



DAERAH : KUALA PENYU

STESEN : COCONUT SEED MENUMBOK

YEAR	MONTH													
	JAN	FEB	MAR	APR	MAY	JUN	JULY	AUG	SEPT	OCT	NOV	DEC	TOTAL	AVERAGE
2008	145.50	225.10	203.70	133.90	158.10	286.10	315.50	134.60	186.40	771.00	393.10	161.40	3,114.40	259.53
2009	674.40	166.40	196.60	63.00	163.00	192.40	135.70	130.30	161.50	243.70	198.20	157.30	2,482.50	206.88
2010	225.00	N.A	46.30	174.30	389.50	294.70	346.60	401.80	513.00	250.50	373.10	418.30	3,433.10	312.10
2011	365.0	298.9	183.5	197.9	240.5	318.30	184.00	185.70	236.70	274.60	149.60	214.90	2,849.60	237.47
2012	163.8	148.1	179.8	203.8	147.9	266.7	176.6	124.1	395.9	252.4	479.4	86.30	2,624.80	218.73
2013	203.10	33.30	120.50	171.30	208.50	179.00	234.70	219.50	309.60	196.10	338.20	244.50	2,458.30	204.86
2014	424.60	137.50	44.70	104.00	264.00	99.30	120.20	343.50	95.30	419.70	414.40	379.80	2,847.00	237.3
2015	475.50	20.80	27.20	54.60	127.00	390.30	190.50	360.10	93.70	58.40	269.50	181.80	2,249.40	187.5

Stesyen Kelapa Menumbok, Kuala Penyu

