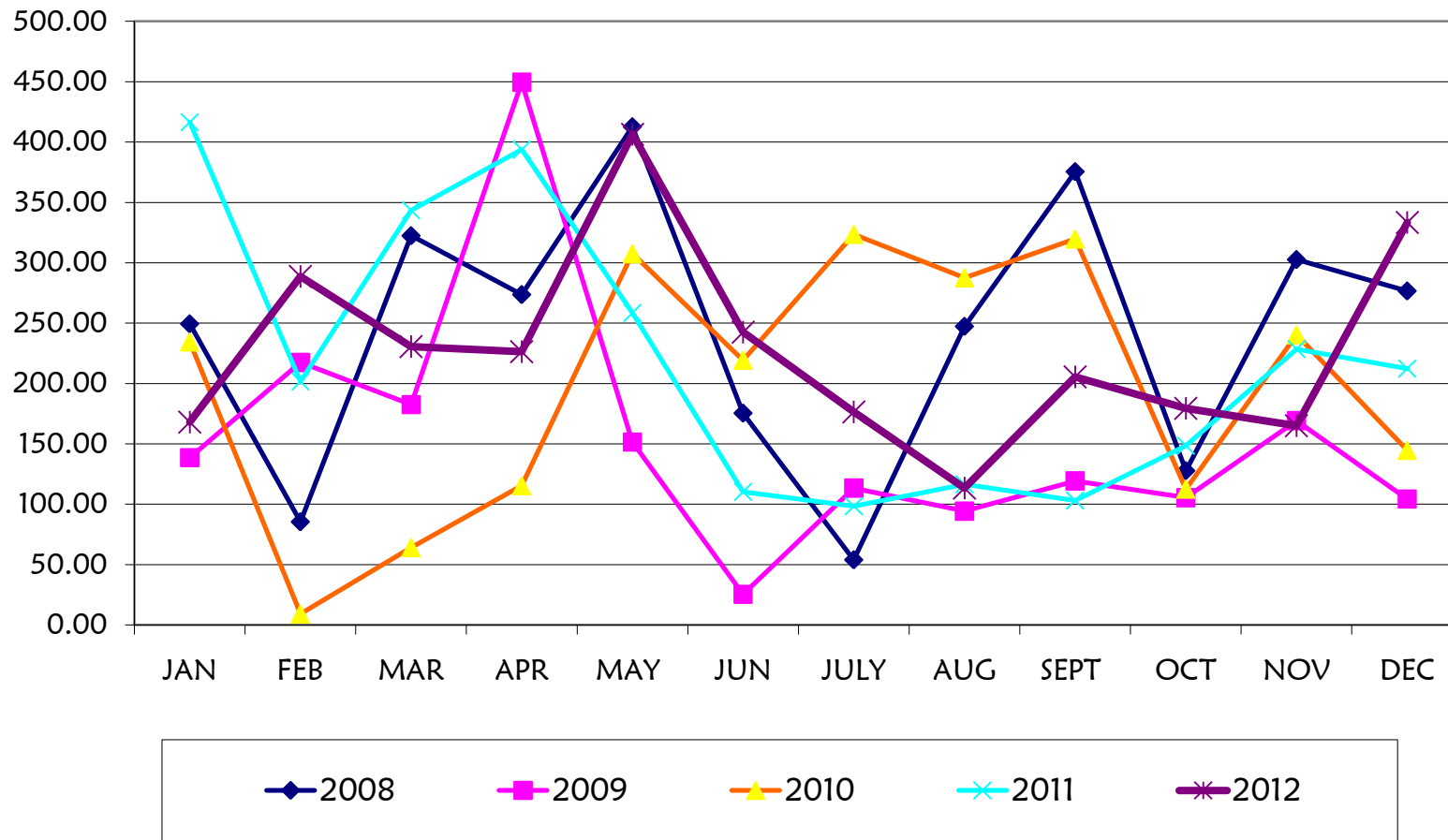


Stesyen Pertanian Semporna



DAERAH : SEMPORNA

STESEN : AGRICULTURE STATION

	JAN	FEB	MAR	APR	MAY	JUN	JULY	AUG	SEPT	OCT	NOV	DEC	TOTAL	AVERAGE
2008	249.42	85.38	322.47	273.65	412.73	175.43	53.90	247.33	375.52	127.72	302.70	276.65	2,902.90	241.91
2009	138.53	217.45	182.51	449.56	151.49	25.41	113.37	94.30	119.34	105.46	169.24	104.35	1,871.01	155.92
2010	234.53	9.15	64.18	115.43	307.59	219.40	323.60	287.58	319.75	112.61	240.43	144.73	2,378.98	198.25
2011	416.4	201.7	343.5	393.7	258.5	110.27	98.33	116.43	103.07	148.51	228.48	212.31	2,631.24	219.27
2012	167.95	288.6	230.5	226.46	406.43	242.55	176.52	113.39	205.40	179.51	165.13	333.38	2,735.84	227.99