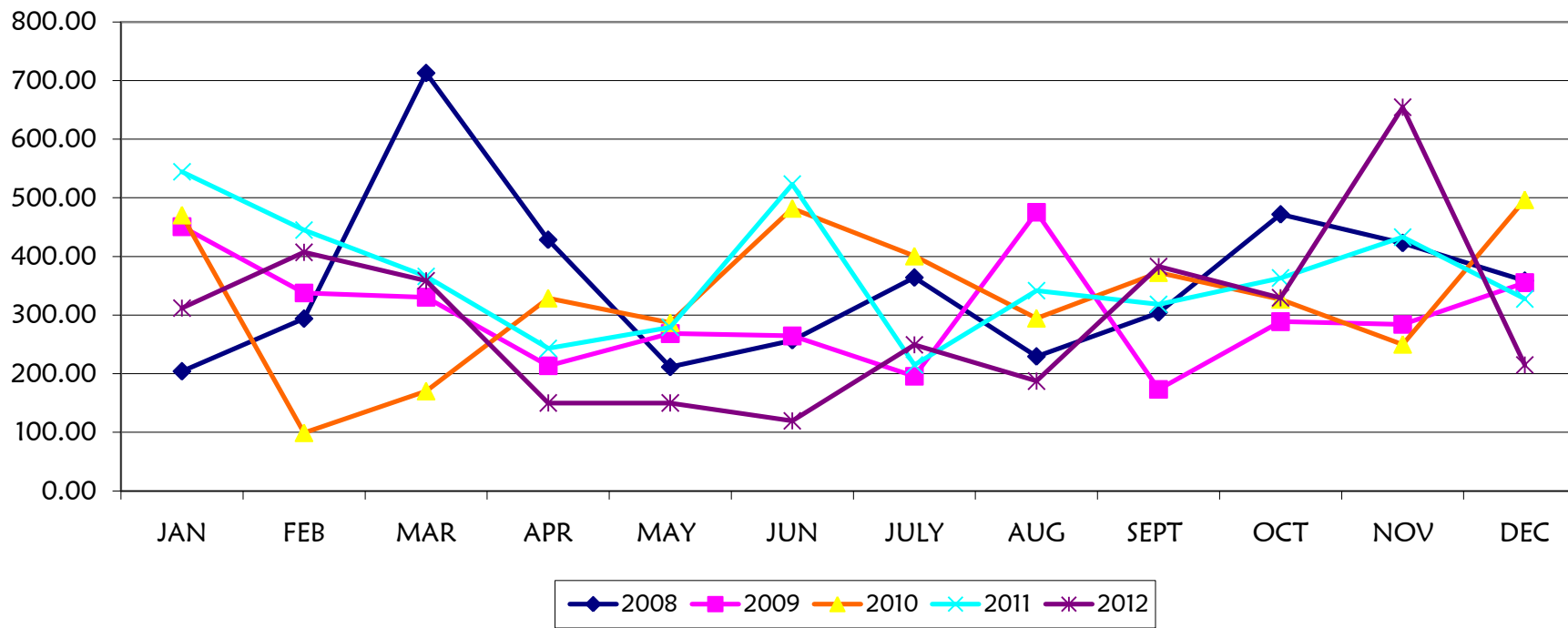


DAERAH : SIPITANG

STESEN : AGRICULTURE STATION MELALIA

YEAR	MONTH													
	JAN	FEB	MAR	APR	MAY	JUN	JULY	AUG	SEPT	OCT	NOV	DEC	TOTAL	AVERAGE
2008	204.00	293.80	712.70	428.30	211.30	257.00	363.90	229.30	304.20	471.70	422.80	358.50	4,257.50	354.79
2009	450.80	337.60	330.50	213.60	268.50	264.50	195.60	475.40	173.30	288.80	284.00	355.30	3,637.90	303.16
2010	470.60	99.20	170.30	328.80	286.90	482.00	400.60	294.50	372.40	326.80	250.00	496.70	3,978.80	331.57
2011	544.4	445.2	366.1	243.1	279.2	523.30	215.10	341.60	318.40	363.30	432.90	327.60	4,400.20	366.68
2012	311.8	407.1	358.7	150.1	150.1	119.5	249.3	187.5	382.8	329.5	654.4	215.1	3,515.90	292.99

Stesyen Pertanian Melalia, Sipitang



STESEN : STATION SINDUMIN

YEAR	MONTH													
	JAN	FEB	MAR	APR	MAY	JUN	JULY	AUG	SEPT	OCT	NOV	DEC	TOTAL	AVERAGE
2008	189.3	388.9	414.1	414.1	98.6	313.6	400.9	383.0	261.6	433.0	401.2	121.9	3,820.2	318.4
2009	260.8	325.8	489.0	104.3	277.0	271.2	81.4	180.4	189.2	180.4	231.4	286.4	2,877.3	239.8
2010	259.6	15.0	114.6	151.4	202.5	285.7	413.6	406.2	375.8	280.4	286.0	495.3	3,286.1	273.8
2011	603.1	455.6	332.4	271.8	264.3	489.20	193.00	303.90	508.50	151.70	275.80	206.80	4,056.1	338.0
2012	381.7	387.2	173.5	419.9	140.8	89.3	377.9	195.0	200.90	369.30	700.1	289.0	3,724.6	310.4

Stesyen Pertanian Sindumin, Sipitang

